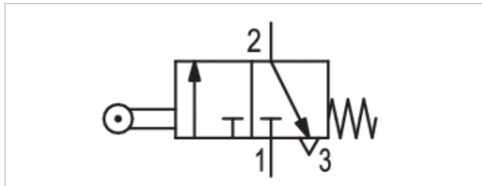


# Series A-Pilotair®

- Qn = 1300 l/min
- Compressed air connection output 1/4 - 18 NPTF
- 2-CA-1A, Cam follower



Version	Poppet valve
Activation	Mechanical
Sealing principle	Soft sealing
Nominal flow Qn	1300 l/min
Working pressure min./max.	0 ... 13.7 bar
Control pressure min./max.	0 ... 17.3 bar
Ambient temperature min./max.	-40 ... 93 °C
Medium temperature min./max.	-40 ... 93 °C
Medium	Compressed air
Max. particle size	40 µm
Oil content of compressed air	0 ... 1 mg/m³
Max. input pressure	17.2 bar
Weight	0.34 kg



## Technical data

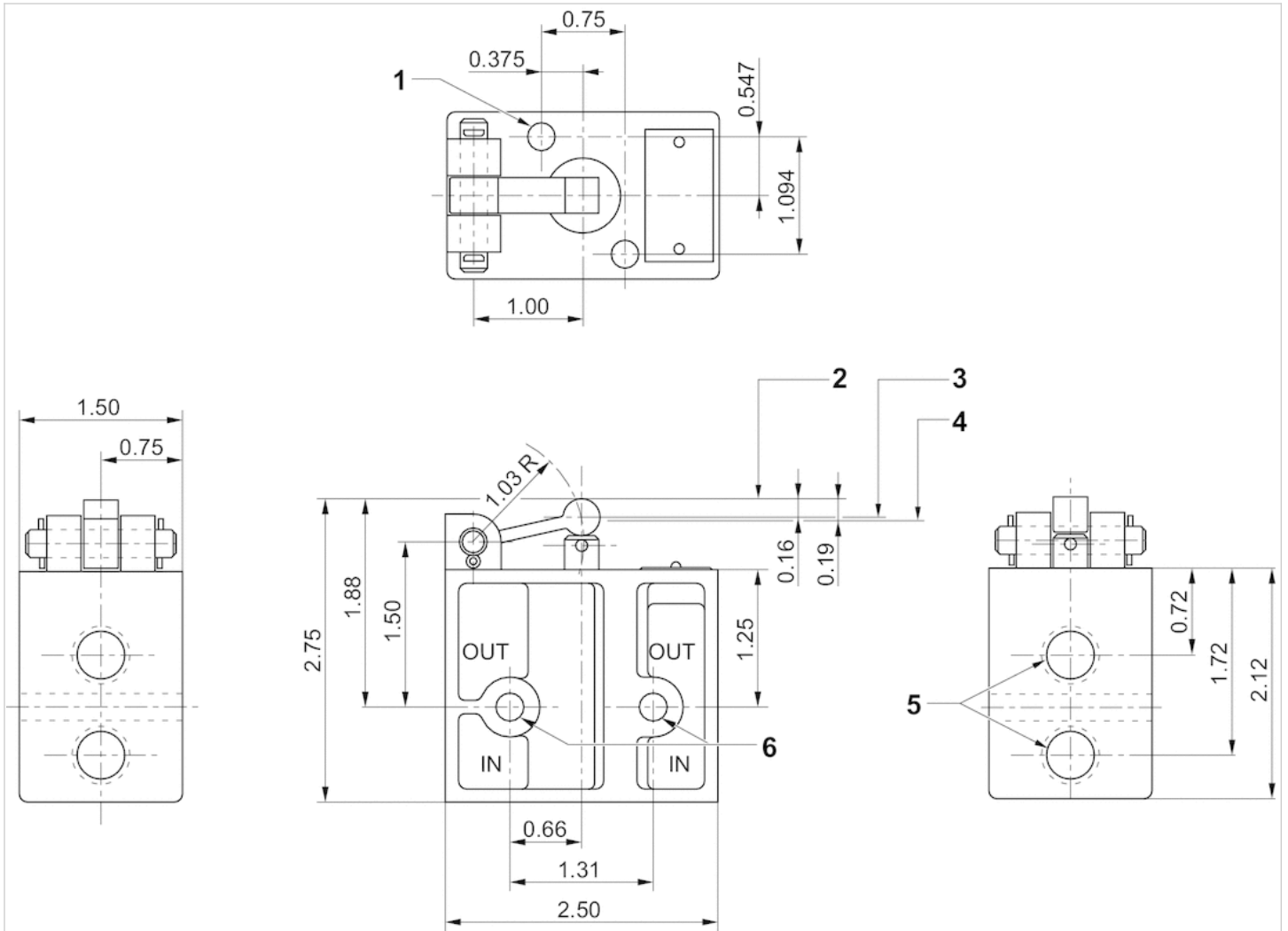
Part No.	Version	Compressed air connection	
		Input	Output
R431004665	NC	1/4 - 18 NPTF	1/4 - 18 NPTF

## Technical information

Material	
Housing	Die-cast aluminum

# Dimensions

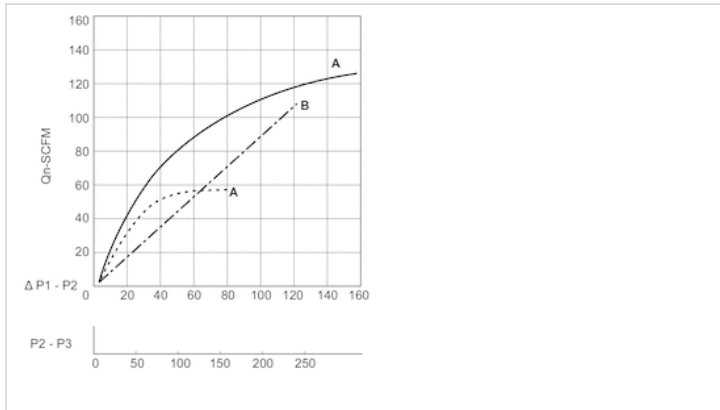
## Dimensions in inches



- 1) Mounting hole Ø26
- 2) Air off position
- 3) Air on position
- 4) Full on position
- 5) 1/4 - 18 NPTF
- 6) Mounting hole Ø26

## Diagrams

### Flow diagram



A) p1 = 200

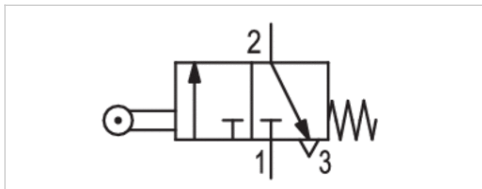
A) p1 = 80

B) (p1 - Pp2) Port 1 (input) ▶ Port 2 (Output)

(p2 - p3) Port 2 (Output) ▶ Port 3 (Exhaust)

# Series A-Pilotair®

- Qn = 1300 l/min
- Compressed air connection output 1/4 - 18 NPTF
- 2-CA-1A-2W, Roller, NC



Version	Poppet valve
Activation	Mechanical
Actuating element	Roller
Sealing principle	Soft sealing
Nominal flow Qn	1300 l/min
Working pressure min./max.	0 ... 17.3 bar
Control pressure min./max.	0 ... 13.7 bar
Ambient temperature min./max.	-40 ... 93 °C
Medium temperature min./max.	-40 ... 93 °C
Medium	Compressed air
Max. particle size	40 µm
Oil content of compressed air	0 ... 1 mg/m³
Max. input pressure	17.2 bar
Weight	0.34 kg

## Technical data

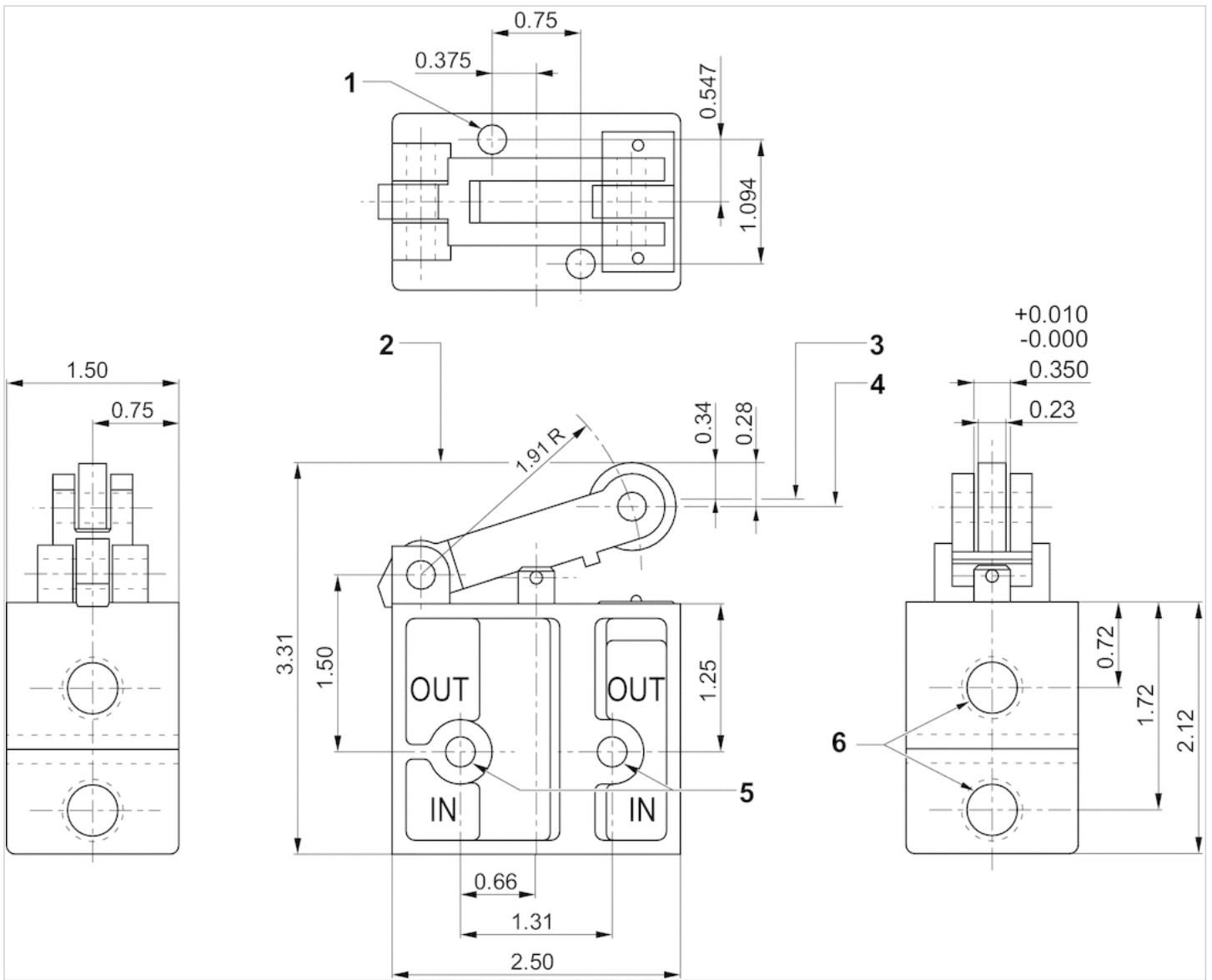
Part No.	Version	Compressed air connection	
		Input	Output
R431004666	NC	1/4 - 18 NPTF	1/4 - 18 NPTF

## Technical information

Material	
Housing	Die-cast aluminum

# Dimensions

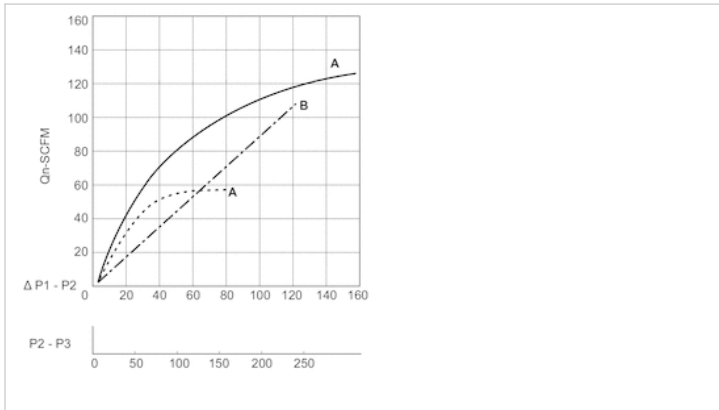
## Dimensions in inches



- 1) Mounting hole Ø26
- 2) Air off position
- 3) Air on position
- 4) Full on position
- 5) Mounting hole Ø26
- 6) 1/4 - 18 NPTF

## Diagrams

### Flow diagram



A)  $p1 = 200$

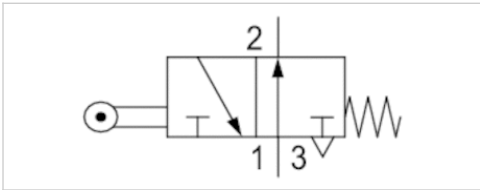
A)  $p1 = 80$

B) ( $p1 - Pp2$ ) Port 1 (input) ▶ Port 2 (Output)

( $p2 - p3$ ) Port 2 (Output) ▶ Port 3 (Exhaust)

## Series A-Pilotair®

- Qn = 1300 l/min
- Qn 1►2 = 8.2-17.2 l/min
- Compressed air connection output 1/4 - 18 NPT
- 2-CA-1B, Roller lever, one-way trip, NO



Version	Poppet valve
Activation	Mechanical
Actuating element	Roller lever, one-way trip
Sealing principle	Soft sealing
Nominal flow Qn	1300 l/min
Working pressure min./max.	0 ... 13.7 bar
Control pressure min./max.	0 ... 17.3 bar
Ambient temperature min./max.	-40 ... 93 °C
Medium temperature min./max.	-40 ... 93 °C
Medium	Compressed air
Max. particle size	40 µm
Oil content of compressed air	0 ... 1 mg/m <sup>3</sup>
Max. input pressure	17.2 bar
Weight	0.45 kg

### Technical data

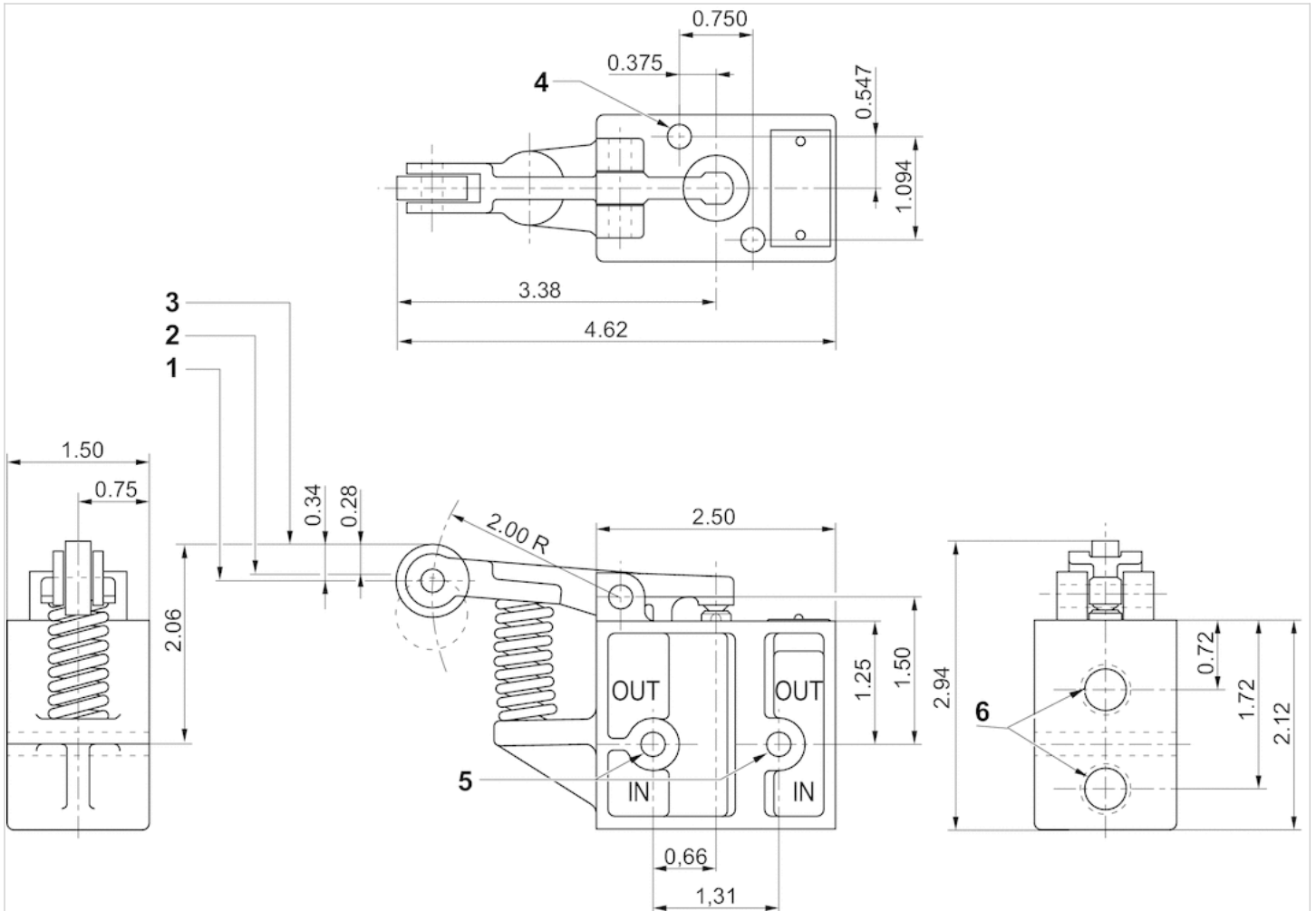
Part No.	Version	Compressed air connection		Flow Qn 1 ► 2
		Input	Output	
R431004669	NO	1/4 - 18 NPT	1/4 - 18 NPT	17.2 l/min
R431004671	NO	1/4 - 18 NPT	1/4 - 18 NPT	17.2 l/min
R431004672	NO	1/4 - 18 NPT	1/4 - 18 NPT	8.2 l/min
R431004673	NO	1/4 - 18 NPT	1/4 - 18 NPT	17.2 l/min

### Technical information

Material	
Housing	Die-cast aluminum

# Dimensions

## Dimensions in inches

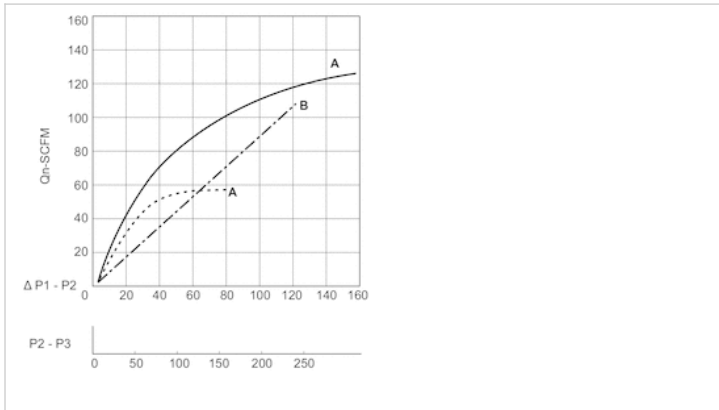


- 1) Mounting hole  $\varnothing 26$
- 2) Full on position
- 3) Air off position
- 4) Air on position
- 5) Mounting hole  $\varnothing 26$
- 6) 1/4 - 18 NPTF



## Diagrams

### Flow diagram



A)  $p1 = 200$

A)  $p1 = 80$

B) ( $p1 - Pp2$ ) Port 1 (input) ▶ Port 2 (Output)

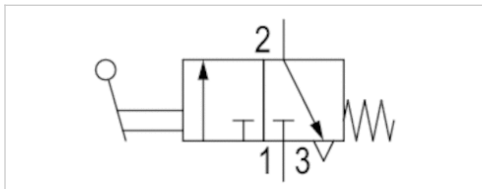
( $p2 - p3$ ) Port 2 (Output) ▶ Port 3 (Exhaust)

# Series A-Pilotair®

- Qn = 1300 l/min
- Compressed air connection output 1/2-14 NPTF
- 2-LA-1A, With hand lever, normally closed



Version	Poppet valve
Activation	Mechanical
Sealing principle	Soft sealing
Nominal flow Qn	1300 l/min
Working pressure min./max.	0 ... 17.3 bar
Control pressure min./max.	0 ... 13.7 bar
Ambient temperature min./max.	-40 ... 93 °C
Medium temperature min./max.	-40 ... 93 °C
Medium	Compressed air
Max. particle size	40 µm
Oil content of compressed air	0 ... 1 mg/m³
Max. input pressure	17.2 bar
Weight	0.43 kg



## Technical data

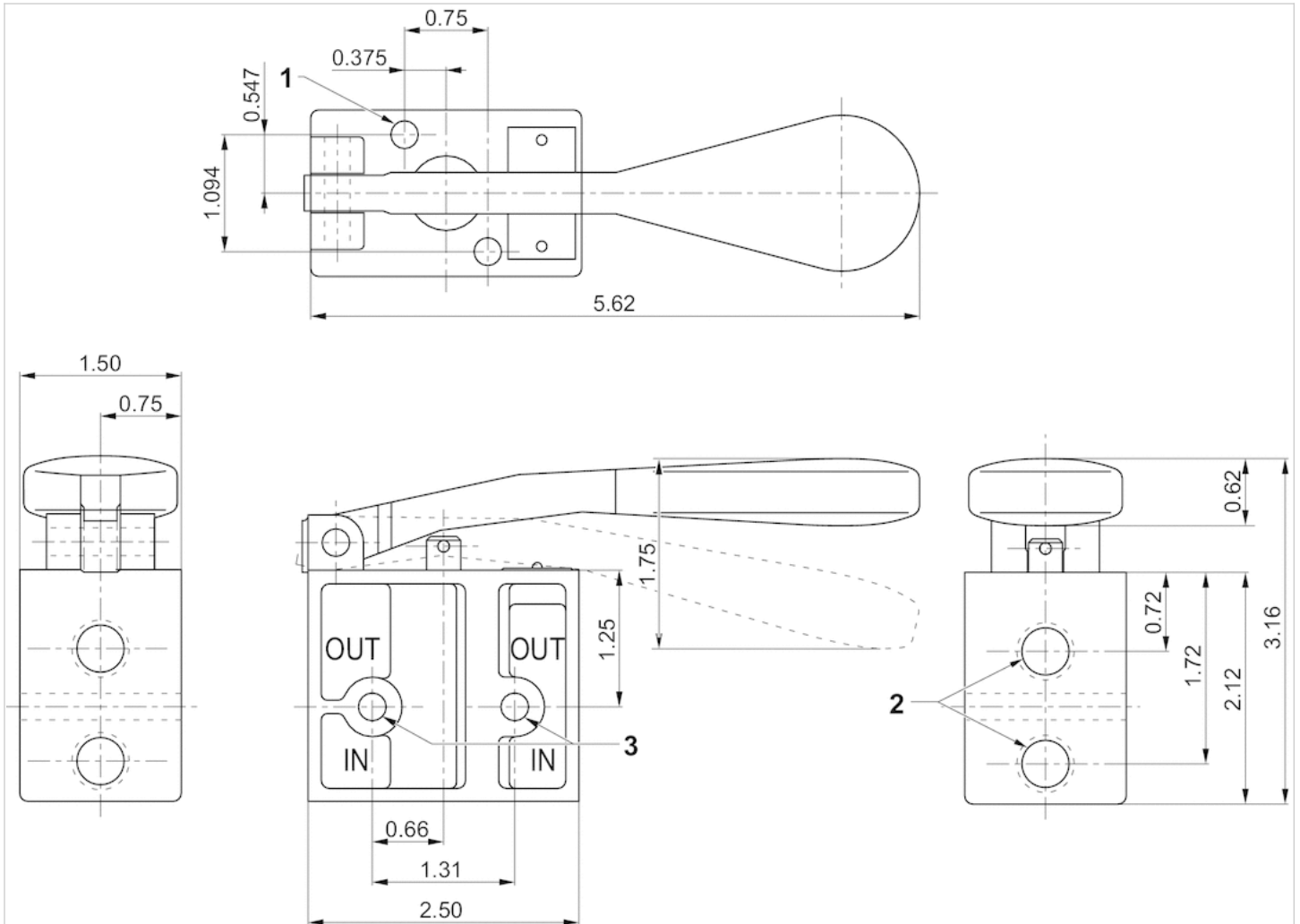
Part No.	Version	Compressed air connection	
		Input	Output
R431004675	NC	1/4 - 18 NPTF	1/2-14 NPTF

## Technical information

Material	
Housing	Die-cast aluminum

## Dimensions

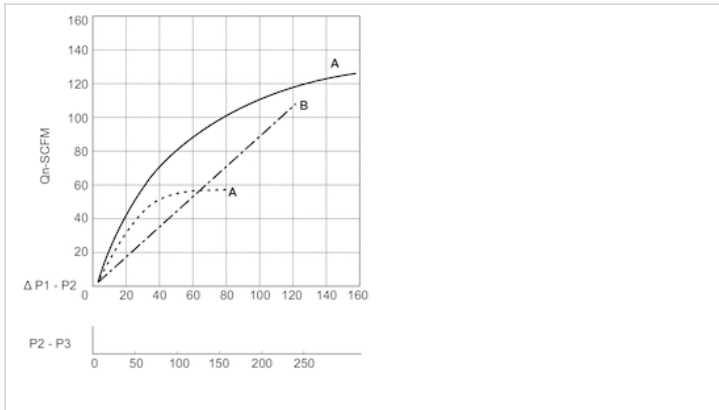
### Dimensions in inches



- 1) Mounting hole  $\varnothing 26$
- 2) 1/4 - 18 NPTF
- 3) Mounting hole  $\varnothing 26$

## Diagrams

### Flow diagram



A)  $p_1 = 200$

A)  $p_1 = 80$

B) ( $p_1 - p_2$ ) Port 1 (input) ▶ Port 2 (Output)

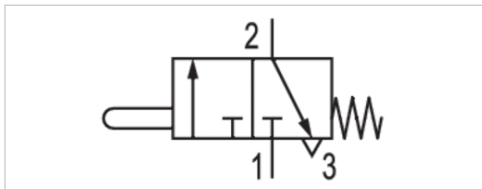
( $p_2 - p_3$ ) Port 2 (Output) ▶ Port 3 (Exhaust)

# Series A-Pilotair®

- Qn = 1300 l/min
- Compressed air connection output 1/4 - 18 NPTF
- 2-MA-1A, Plunger without clevis mounting, NC



Version	Poppet valve
Activation	Mechanical
Sealing principle	Soft sealing
Nominal flow Qn	1300 l/min
Working pressure min./max.	0 ... 17.3 bar
Control pressure min./max.	0 ... 13.7 bar
Ambient temperature min./max.	-40 ... 93 °C
Medium temperature min./max.	-40 ... 93 °C
Medium	Compressed air
Max. particle size	40 µm
Oil content of compressed air	0 ... 1 mg/m³
Max. input pressure	17.2 bar
Weight	0.23 kg



## Technical data

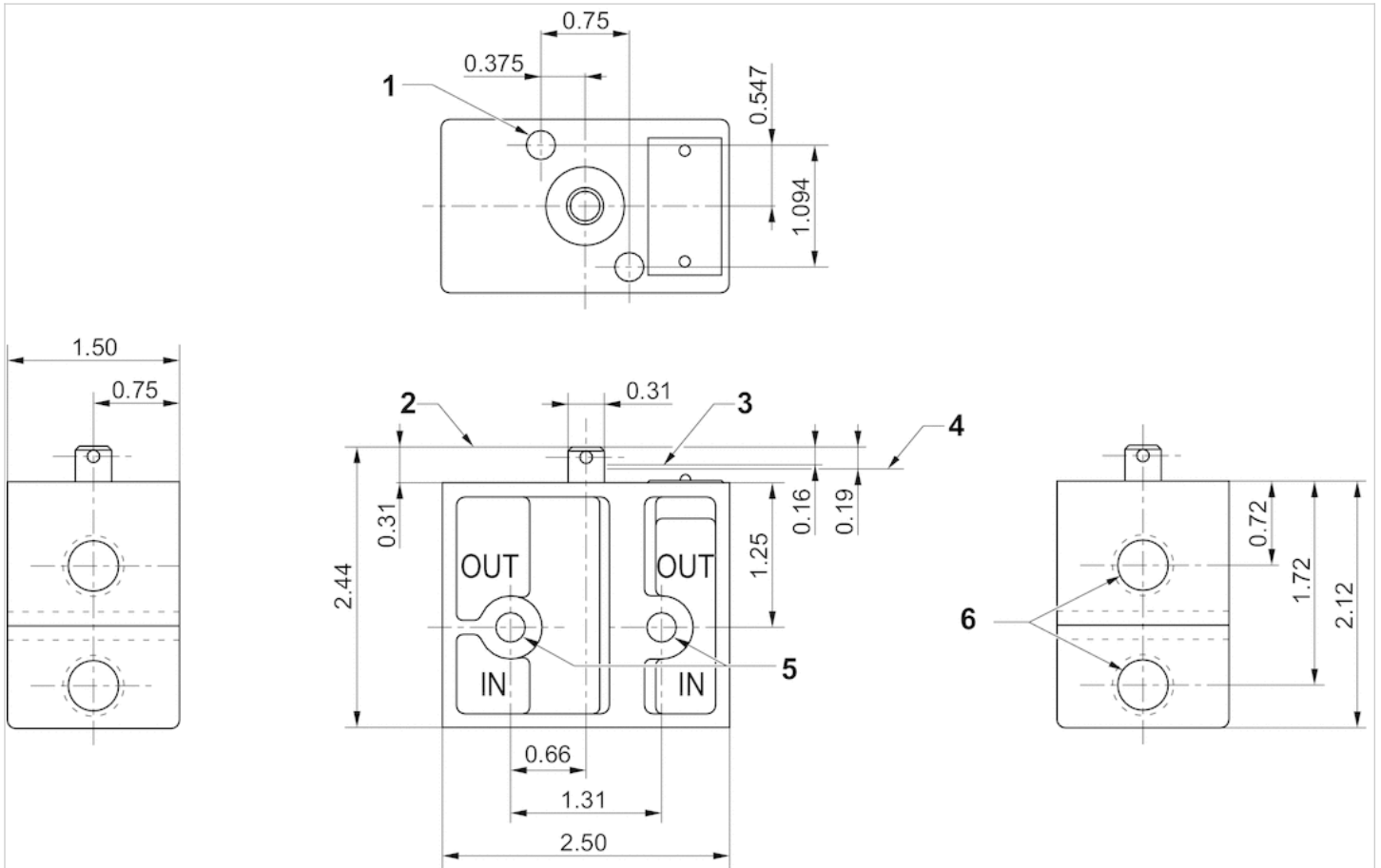
Part No.	Version	Compressed air connection	
		Input	Output
R431004659	NC	1/4 - 18 NPTF	1/4 - 18 NPTF

## Technical information

Material	
Housing	Die-cast aluminum

# Dimensions

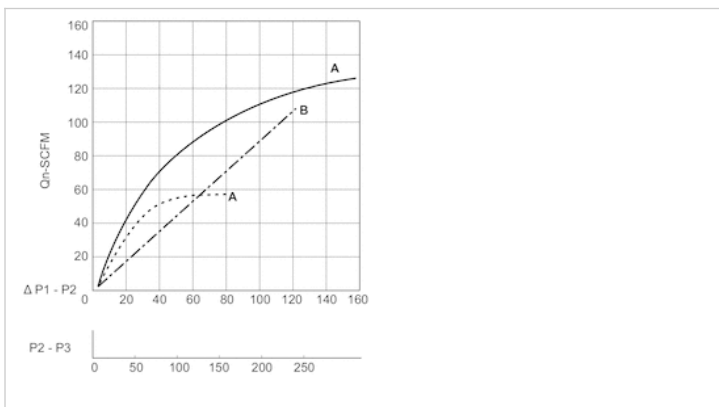
## Dimensions in inches



- 1) Mounting hole  $\varnothing 26$
- 2) Air off position
- 3) Air on position
- 4) Full on position
- 5) Mounting hole  $\varnothing 26$
- 6) 1/4 - 18 NPTF

# Diagrams

## Flow diagram



A)  $p1 = 200$

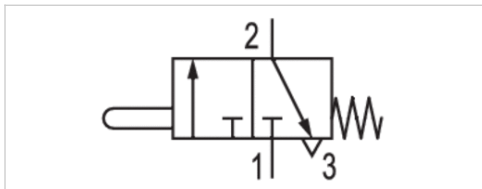
- A) p1 =80
- B) (p1 - Pp2) Port 1 (input) ▶ Port 2 (Output)
- (p2 - p 3) Port 2 (Output) ▶ Port 3 (Exhaust)

# Series A-Pilotair®

- Qn = 1300 l/min
- Compressed air connection output 1/4 - 18 NPTF
- 2-MA-1A, Plunger with clevis mounting, NO



Version	Poppet valve
Activation	Mechanical
Sealing principle	Soft sealing
Nominal flow Qn	1300 l/min
Working pressure min./max.	0 ... 17.3 bar
Control pressure min./max.	0 ... 13.7 bar
Ambient temperature min./max.	-40 ... 93 °C
Medium temperature min./max.	-40 ... 93 °C
Medium	Compressed air
Max. particle size	40 µm
Oil content of compressed air	0 ... 1 mg/m³
Max. input pressure	17.2 bar
Weight	0.23 kg



## Technical data

Part No.	Version	Compressed air connection	
		Input	Output
R431004661	NC	1/4 - 18 NPTF	1/4 - 18 NPTF

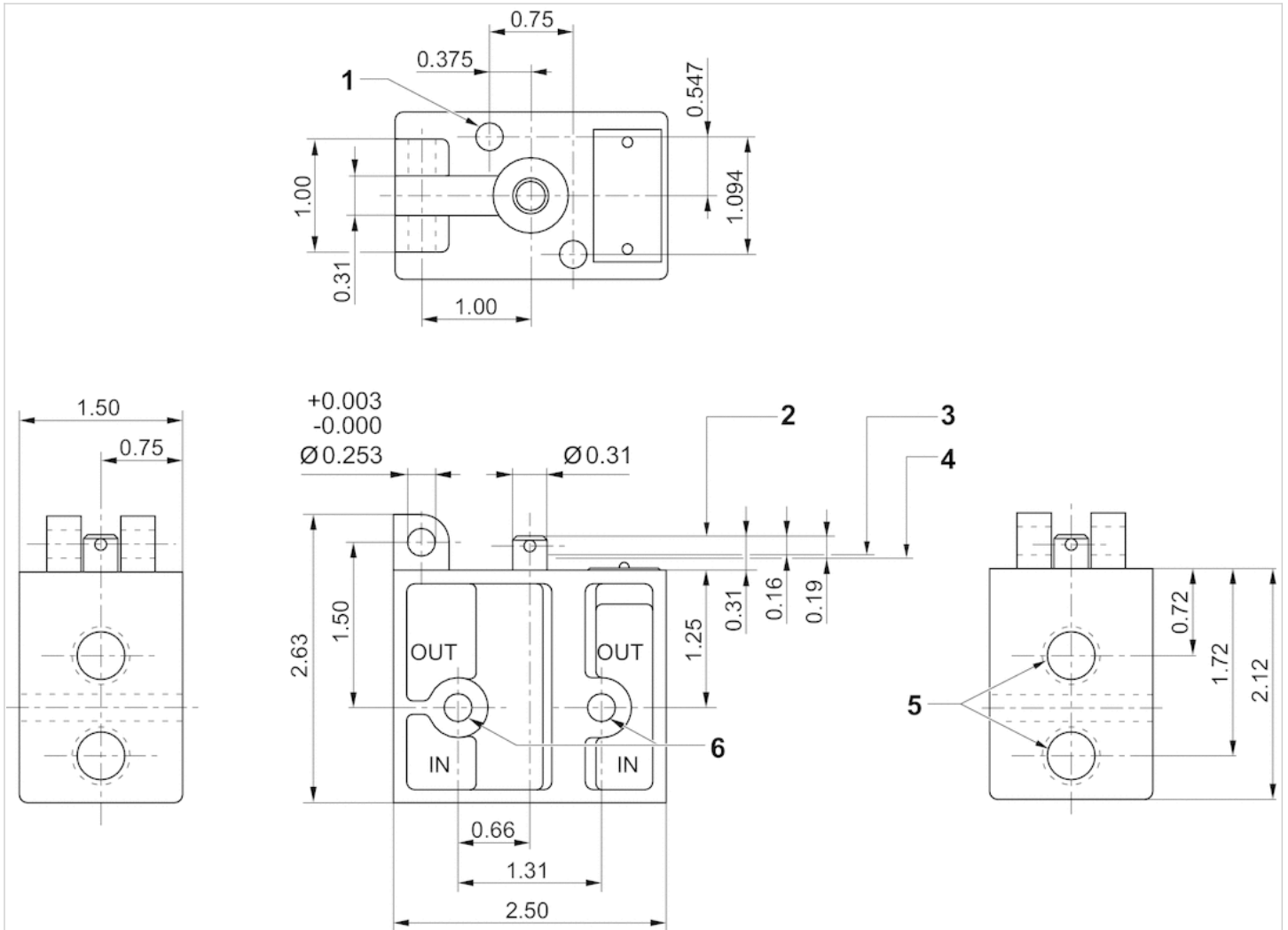
## Technical information

Material	
Housing	Die-cast aluminum



# Dimensions

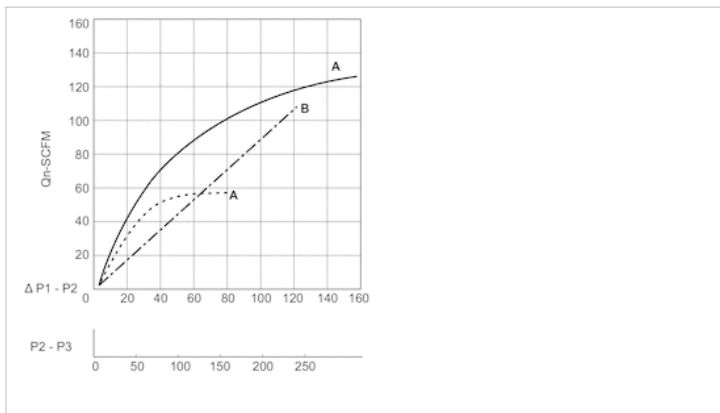
## Dimensions in inches



- 1) Mounting hole  $\text{Ø}26$
- 2) Air off position
- 3) Air on position
- 4) Full on position
- 5) 1/4 - 18 NPTF
- 6) Mounting hole  $\text{Ø}26$

## Diagrams

### Flow diagram



A) p1 = 200

A) p1 = 80

B) (p1 - Pp2) Port 1 (input) ▶ Port 2 (Output)

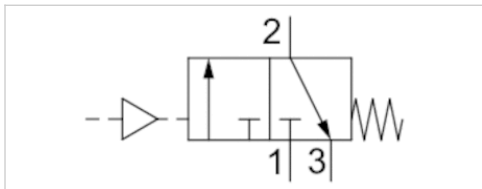
(p2 - p3) Port 2 (Output) ▶ Port 3 (Exhaust)

# Series A-Pilotair®

- Qn = 1300 l/min
- Compressed air connection output 1/4 - 18 NPT
- 2-PA-1A, pilot air



Version	Poppet valve
Activation	Mechanical
Sealing principle	Soft sealing
Nominal flow Qn	1300 l/min
Working pressure min./max.	0 ... 17.3 bar
Control pressure min./max.	0 ... 13.7 bar
Ambient temperature min./max.	-40 ... 93 °C
Medium temperature min./max.	-40 ... 93 °C
Medium	Compressed air
Max. particle size	40 µm
Oil content of compressed air	0 ... 1 mg/m³
Max. input pressure	17.2 bar
Weight	0.34 kg



## Technical data

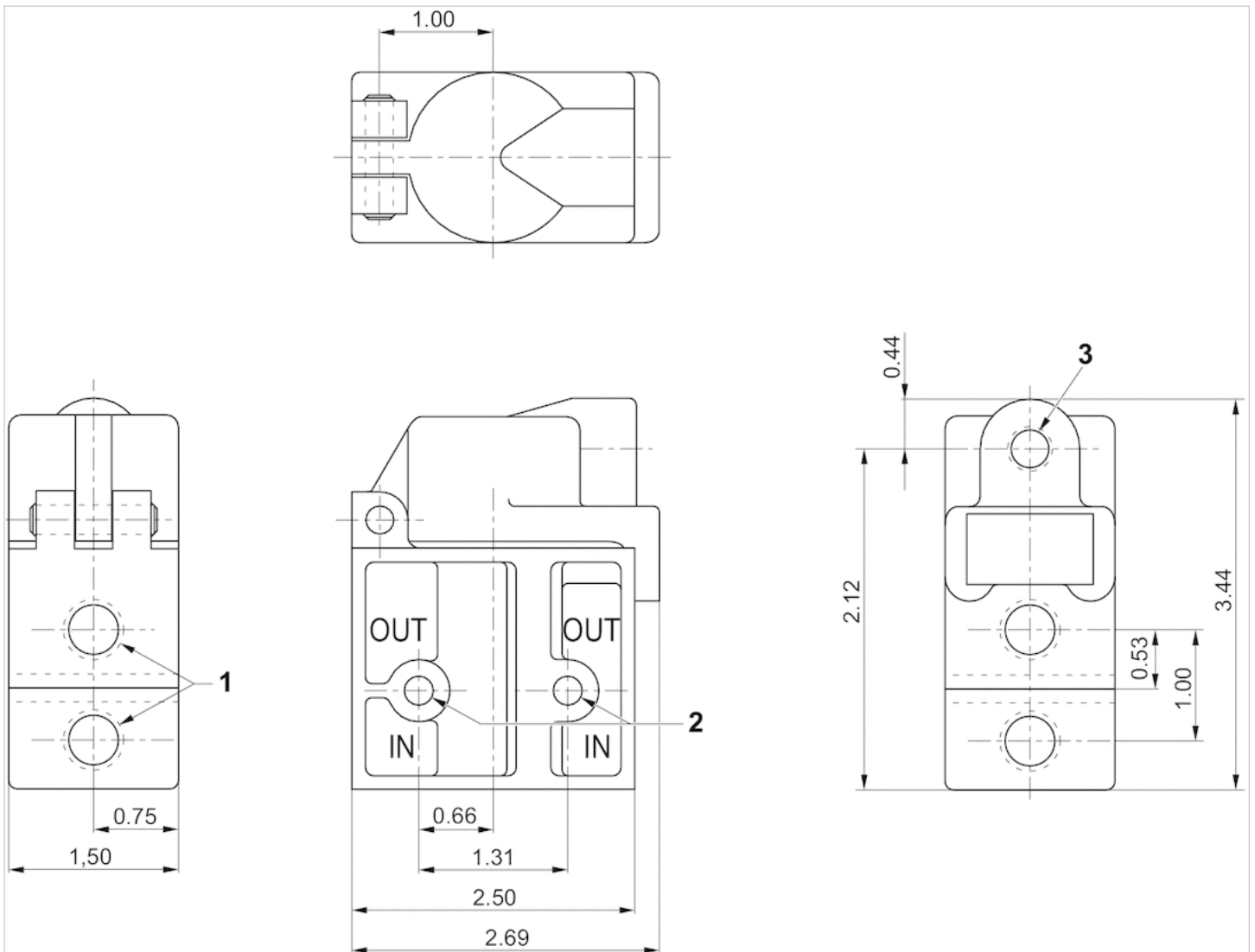
Part No.	Compressed air connection	
	Input	Output
R431004674	1/4 - 18 NPT	1/4 - 18 NPT

## Technical information

Material	
Housing	Die-cast aluminum

# Dimensions

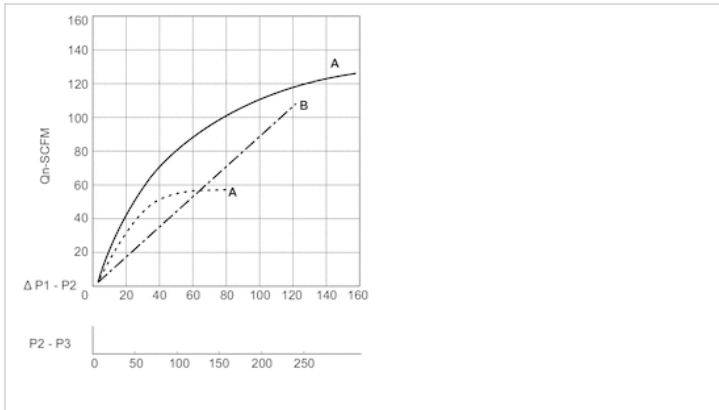
## Dimensions in inches



- 1) 1/4 - 18 NPTF
- 2) Mounting hole Ø26
- 3) 1/8-27 NPTF

## Diagrams

### Flow diagram



A) p1 = 200

A) p1 = 80

B) (p1 - Pp2) Port 1 (input) ▶ Port 2 (Output)

(p2 - p3) Port 2 (Output) ▶ Port 3 (Exhaust)